

Australia why so slow?

Electric Vehicle uptake and what you can do about it.



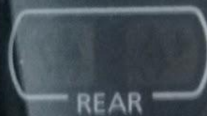
By Gabriel and Kymberly Noronha



Our Journey



READY



Why Electric Vehicles are Important?





Noise Pollution



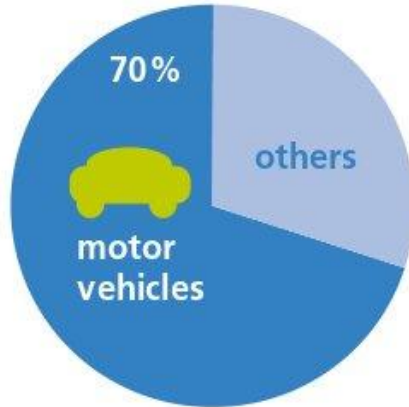
Cleaner Air



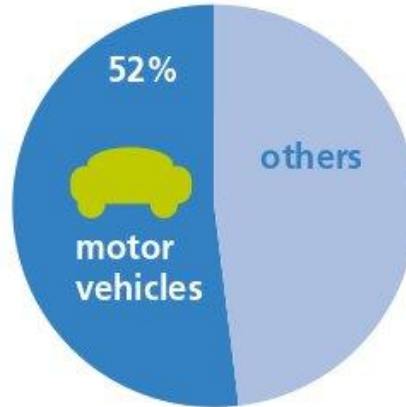
Urban Air Pollution sources

NSW EPA

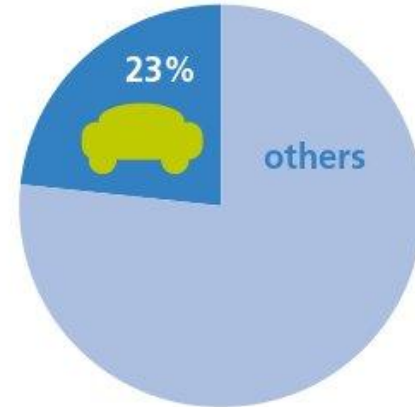
NO_x emission sources



VOC emission sources



Fine particulate emission sources



Climate Change- CO₂

- Tail pipe extension argument
- Powershop Electric Vehicle special greenpower for a year at no extra cost
- Zero emissions with the click of a button

Rechargi



Congestion







What electric vehicles
are available

***Recharging* NSW**



Audi A3 e-tron Plug in hybrid



BMW i3 and i8 EV and PHEV



Mitsubishi Outlander PHEV



Nissan LEAF



Recharging NSW

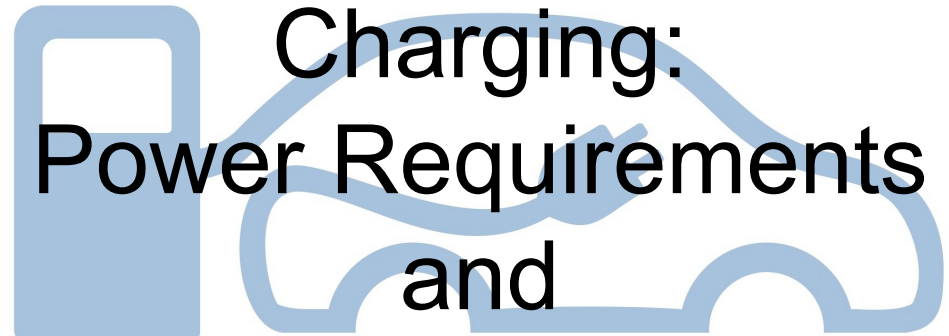
Porsche Panamera and Cayenne



Tesla Model S



Zero and Catavolt



Charging: Power Requirements and The Effect on the Grid

Recharging NSW

Mobile cables

Powerpoint



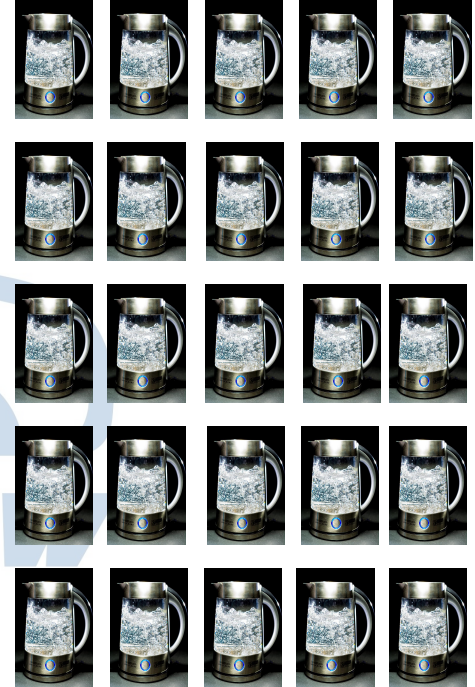
Dedicated Units

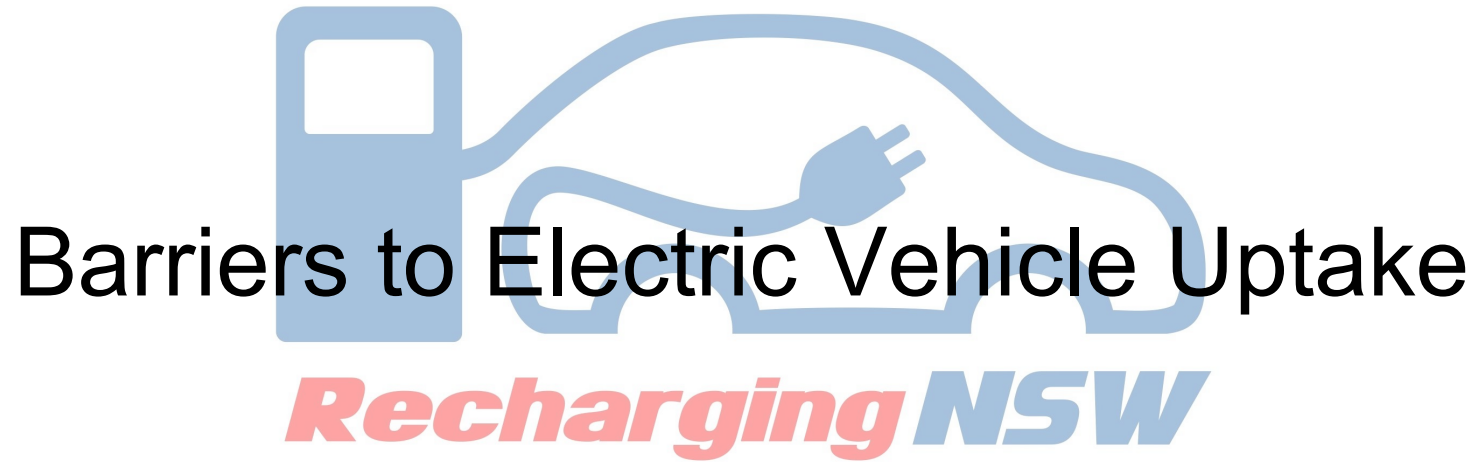
Keba Kecontact P20



Recharging NSW

Fast Chargers





Barriers to Electric Vehicle Uptake

***Recharging* NSW**



Features

LEAF

1 OPTIONS



Pulsar Hatch

3 OPTIONS



Range

Key Transport Indicators¹ by Subregion, 2012/13

Sydney Greater Metropolitan Area

Indicator		Central	Central Coast	Illawarra	Lower Hunter	North	South	South West	West	West Central	Sydney-Canberra Corridor
Vehicles	Private vehicles	402,000	215,000	261,000	378,000	524,000	349,000	370,000	225,000	576,000	33,000
	Vehicles per household	1.2	1.7	1.7	1.8	1.6	1.6	1.8	1.9	1.7	1.9
Distance (kms)	Total travel	16,370,000	14,750,000	16,508,000	20,494,000	24,273,000	16,379,000	23,475,000	15,726,000	31,859,000	2,310,000
	Total travel per capita	20.7	46.0	43.3	38.0	28.9	27.3	36.9	48.0	30.8	54.0
	Av. trip length	5.2	12.8	10.4	9.8	7.2	7.8	11.2	12.7	9.1	13.5
	Vehicle travel (VKT)	8,607,000	8,931,000	10,312,000	14,144,000	13,653,000	9,560,000	14,637,000	9,889,000	18,847,000	1,594,000
	VKT per capita	10.9	27.9	27.0	26.2	16.3	15.9	23.0	30.2	18.2	37.2
	VKT per household	25.2	69.6	67.7	65.7	42.0	43.1	70.7	83.6	54.4	91.6
Travel time (mins)	Av. work trip duration	32	37	25	26	32	35	37	35	37	22
	Av. non-work trip duration	18	19	16	17	19	18	20	19	19	20
	Av. Trip duration - all purposes	21	22	18	19	21	21	23	23	23	20
	Daily travel time per capita	82	79	73	72	84	75	77	86	77	80

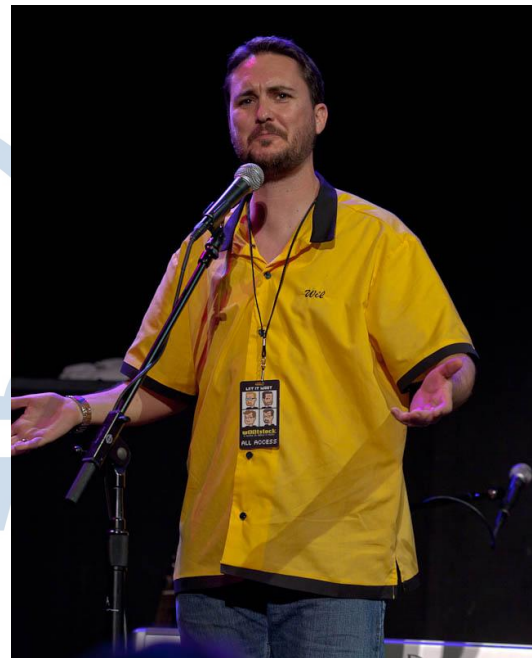


What is Being Done to Encourage
Electric Vehicle Ownership?

***Recharging* NSW**

Australia

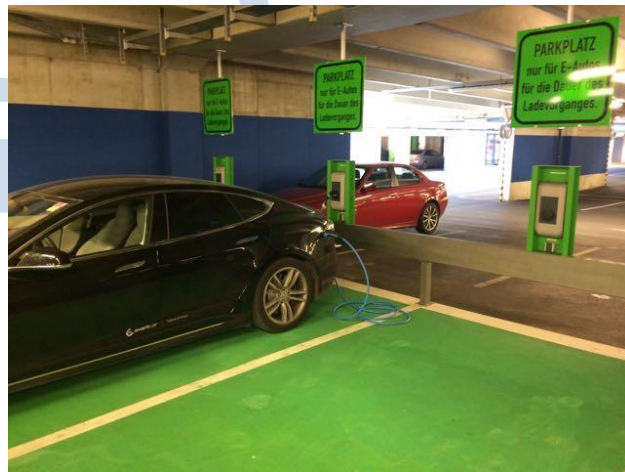
- Luxury vehicle tax break
 - Increased threshold for 'fuel efficient cars' (7L/100km or less)
- Stamp duty exempt in ACT
 - saving ~3%
- \$100 off Vic Rego
- Adelaide City Council
 - solar charging station rebate



Worldwide

- Tax incentives and discounts
- Access to T2 and Bus lanes
- Access to restricted/paid parking in the city
- Exemption from 'Road Rationing'
- Infrastructure incentives

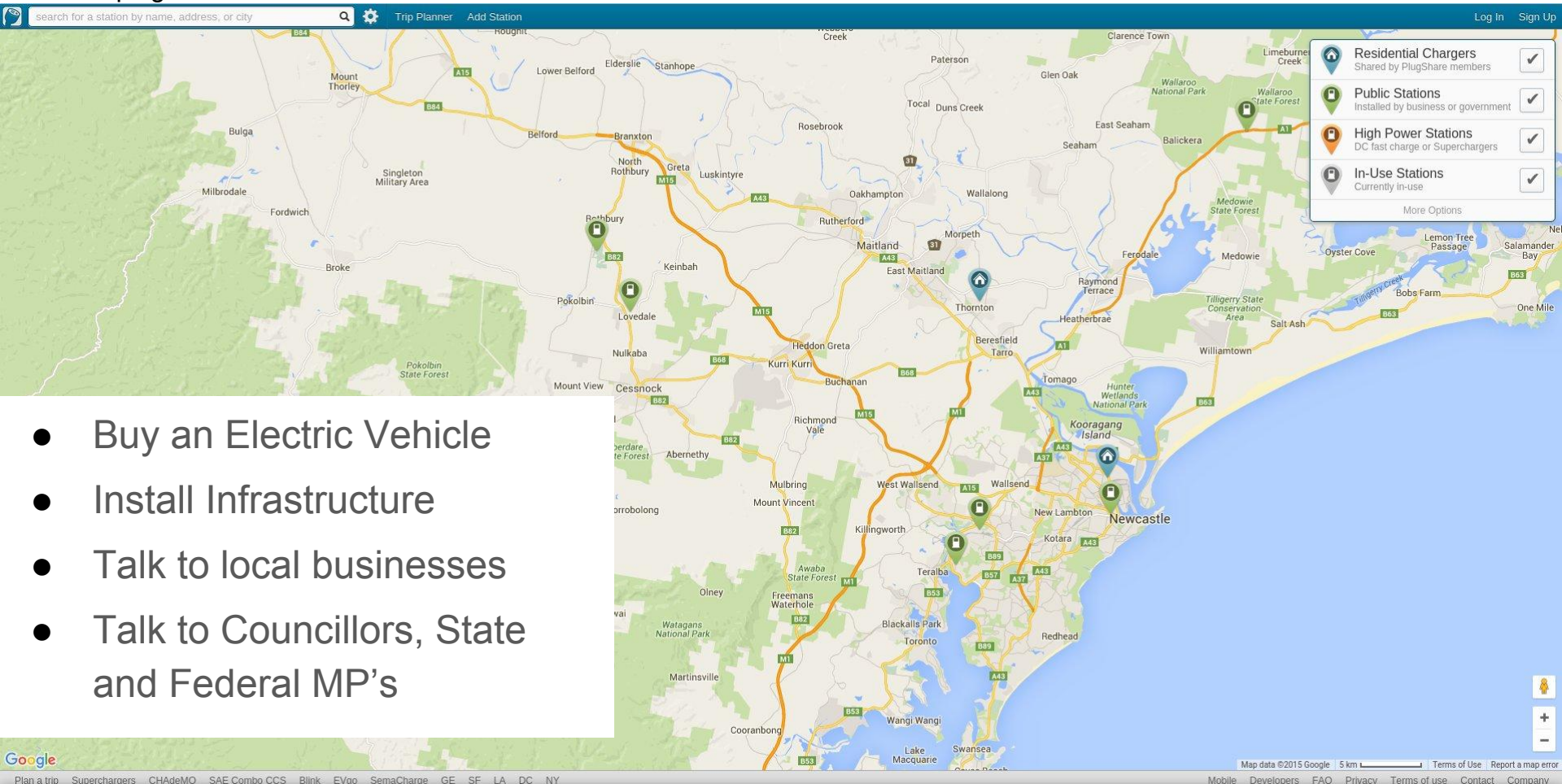
Recharging





What can you do to help?

Recharging NSW



- Buy an Electric Vehicle
- Install Infrastructure
- Talk to local businesses
- Talk to Councillors, State and Federal MP's

Are Electric Vehicles The Future ?



***Recharging* NSW**

They are the now





Gabriel and Kymberly Noronha
www.RechargingNSW.com.au
[@RechargingNSW](https://www.facebook.com/rechargingnsw)
www.facebook.com/rechargingnsw

Pictures sourced from:

https://upload.wikimedia.org/wikipedia/commons/4/4c/Audi_A3_e-tron_front-left_2013_Tokyo_Motor_Show.jpg

https://commons.wikimedia.org/wiki/File:BMW_i8_IAA_2013_04.jpg

https://commons.wikimedia.org/wiki/File:Porsche_Cayenne_S_e-hybrid_-_Mondial_de_l'Automobile_de_Paris_2014_-_005.jpg

https://commons.wikimedia.org/wiki/File:IAA_2013_Porsche_Panamera_S_e-hybrid_%289834184944%29.jpg

https://commons.wikimedia.org/wiki/File:Tesla_Model_S_P85D.jpg

<http://insideevs.com/abb-multi-standard-rapid-chargers-coming-northumberland-uk/>

<http://flickr.com/photos/93829696@N03/9399581728>

<http://www.flickr.com/photos/elbilforeningen/8634591266/in/faves-30998987@N03/>

